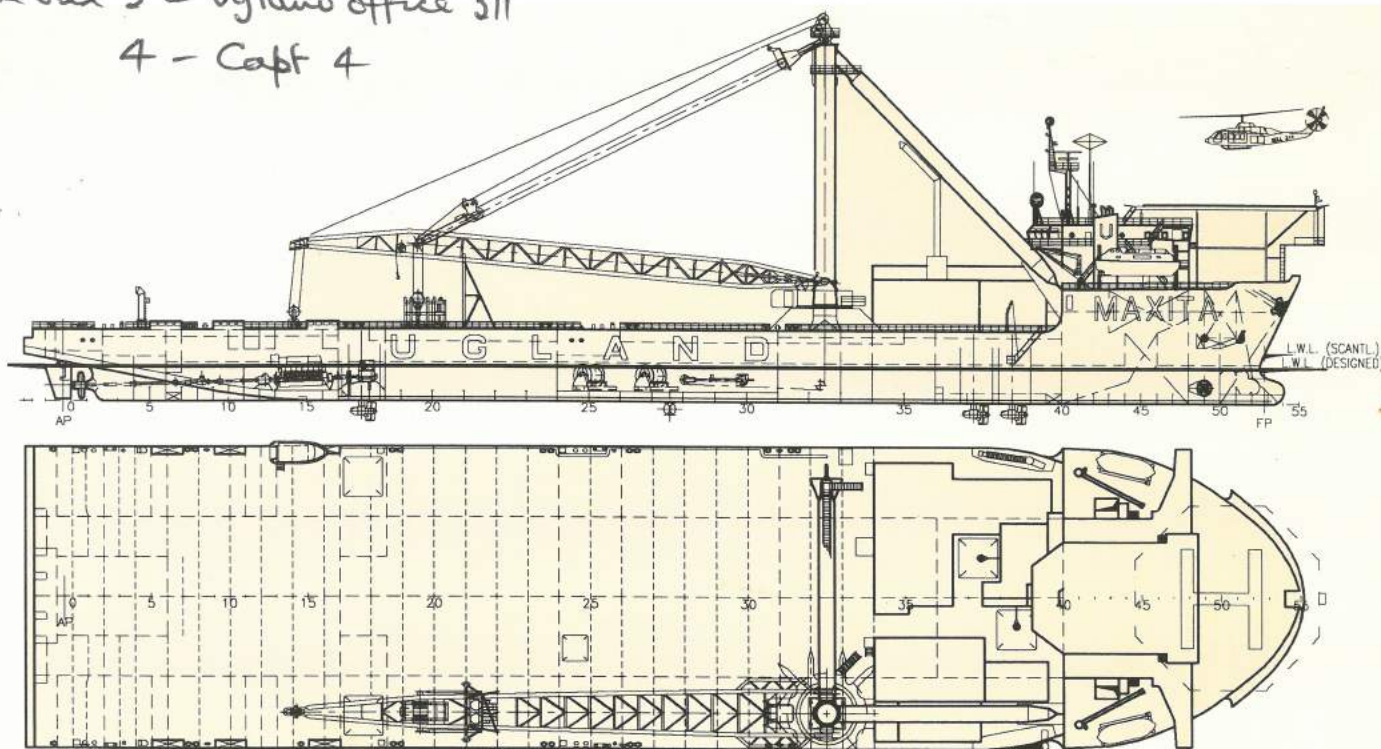


Level 3 - Uglund office 311
4 - Capt 4



MAIN PARTICULARS AND FEATURES

Name: MSV Maxita

Built: Nagasaki Ship Yard & Engine Works 1984. Converted 1992 at NYMO AS, Grimstad

Operator: Uglund Offshore

Class: DnV + IAI, DYN POS AUTR NMD class 2 (ERN), EO, HELIDECK (ERN 99,99,99) crane vessel -LOC

Flag: Cayman Island

Port of Registry: Georgetown

LOA: 162 m.

LBP: 152,62 m.

BMId: 38 m.

DMId: 12.5 m.

Draught summer-transit mode: 6,35 m.

Draught summer-DP mode: 9,10 m.

Deadweight summer: Approx. 20,700 dwt.

Gross tonnage: Approx. 14,000 T

Main Propulsion: 2 x 4,375 BHP

Bollard Pull: 85 T

Tunnel thruster FWD: 1 x 800 HP

Azimuth thrusters FWD: 2 x 3,600 HP

Azimuth thrusters aft: 2 x 2,780 HP

Transit speed: 11,5 knots

Fuel consumption transit speed: Approx 26 T IF 180 per 24 hrs.

Fuel consumption in port: 2,0 T MDO per 24 hrs.

Maximum speed: Approx. 14 knots

Fuel consumption max. speed: Approx. 32 T IF 180 per 24 hrs.

Fuel consumption on DP: 15-30 T per 24 hrs.

Total accommodation: 84 in 1 and 2 men cabins

El. power supply: Total: 14,800 kVa, 6,6 kV/440 V, 60Hz, AC

2 x 22 T Windlass, 6 x 12,5 T Mooring winch, EL-HY pump unit for deck machinery, pressure 210 kg/cm²
4 x 0,5 T Capstan. 2 x 5 T at 5 m. Provision cranes. 1 x 600 T crane, outreach 45 meters. Ranged to a waterdepth of 350 meters. The 600 T hook is linked up to the latest technology of active heave compensation system and is capable of handling loads of 500 T submerged weight in the heave compensation mode with up to ±2,65 meter hook motion. The crane contains a whip line of 200 T at 58 meter outreach.



Uglund Offshore

UGLAND OFFSHORE A/S, P.O. Box 323, N-4891 Grimstad, Norway
Tel.: +47 37 09 29 00, Telex: 21 769 Ugoff n, Telefax: +47 37 04 40 10/37 04 45 33
ABERDEEN: CARLTON HOUSE, 32/36 High Street, Banchory, Aberdeenshire AB31 3 SR,
Tel.: (03302) 5555, Telefax: (03302) 5590

MSV «MAXITA»

THE



Uglund Offshore

MSV «MAXITA»

Working Queen of the North Sea

The MSV "MAXITA" is one of the most sophisticated DP-operated vessels in the North Sea. MSV "MAXITA" was built as a module carrier in 1984 and in 1992 she was converted into a versatile offshore vessel in accordance with NMD regulations.



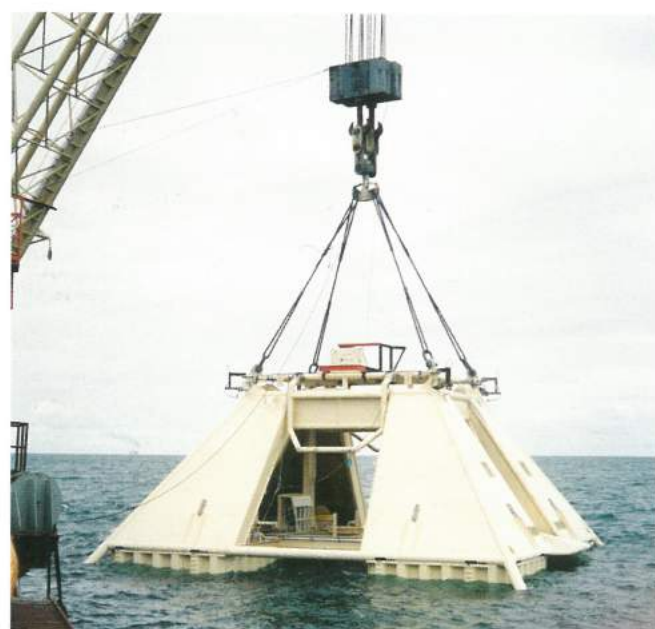
MSV "MAXITA" is designed for most types of offshore work, including subsea installations, heavy lifts, laying of flexible flowlines, umbilicals, cables and small rigid steel lines, burying of subsea lines etc. All types of offshore construction work which requires a very good DP capability.





Position keeping

The vessel has a fully redundant Simrad 702 DP system, which controls the 5 thrusters for an accurate station keeping and track keeping capability.






Heavy lifting

MSV "MAXITA" has a 600 T crane with active heave compensation system. The crane is ranged for operation to a waterdepth of 350 meters. The crane has a 200 T whip hoist.



Highlights

-  3800 m² strong deck area gives high storage capacity and good vessel stability allowing a maximum of 18000 T of deck cargo.
-  600 T crane with active heave compensation.
-  Helicopter deck of the latest design approved for EH 101, Sikorsky 61, Super Puma or Bell 212 size helicopter.



Facilities / Accommodation



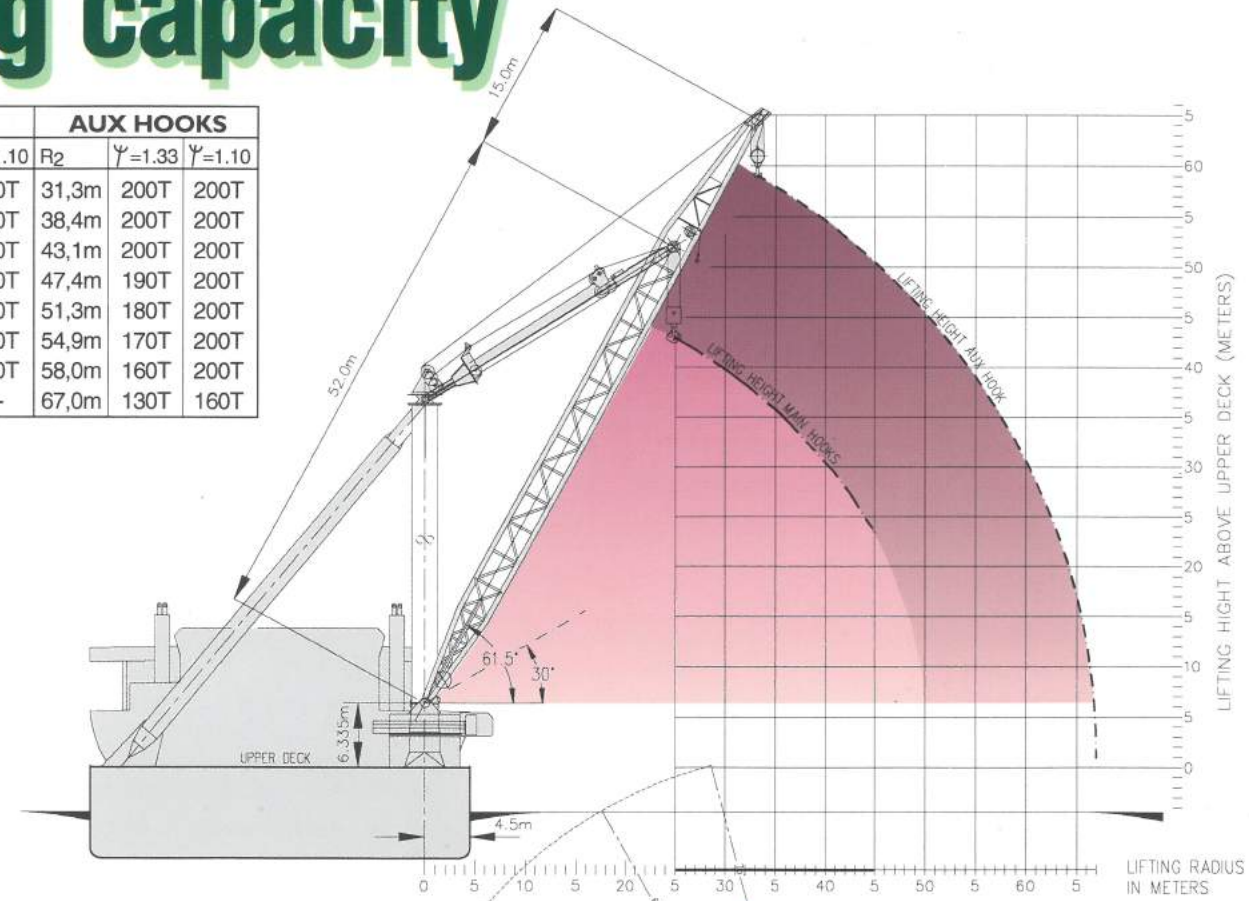
The vessel provides permanent accommodation for 84 persons and precautions have been taken in order to obtain low noise levels in these areas when thrusters are in operation.



Lifting capacity

Angle	MAIN HOOKS				AUX HOOKS		
	R1	$\Psi=1.33$	$\Psi=1.10$	R2	$\Psi=1.33$	$\Psi=1.10$	
61,5°	25,0m	600T	600T	31,3m	200T	200T	
55°	29,8m	600T	600T	38,4m	200T	200T	
50°	33,4m	550T	600T	43,1m	200T	200T	
45°	36,8m	500T	600T	47,4m	190T	200T	
40°	39,8m	450T	600T	51,3m	180T	200T	
35°	42,6m	400T	600T	54,9m	170T	200T	
30°	45,0m	350T	600T	58,0m	160T	200T	
0°	--	--	--	67,0m	130T	160T	

DYN. FACTORY =1,33



- 400 T SECTOR
- 600 T SECTOR
- 400 T SECTOR ABOVE DECK
- 300 T SECTOR ABOVE DECK

