

THE WORLD



THE WORLD of ResidencSea

For more information in the U.S. and
Canada, please call (800) 970-6601

From the U.S. and Canada,
please call (305) 779-3399



ITINERARY 2002 GUIDE

DATE	DAYS	ITINERARY NUMBER	PORTS		ADAGIO SUITES	LIBRETTO SUITES	CONCERTO SUITES	SONATA SUITES	RHAPSODY SUITES	CRUISE-ONLY ALLOWANCE [†]	15% APB* EXPIRATION DATE	10% EBI* EXPIRATION DATE
Jan 24	16	5201	Lisbon, Funchal ¹ , St. Cruz de Tenerife, Las Palmas ¹ , Rio de Janeiro ¹	Published Fare	\$14,695	\$15,595	\$16,495	\$19,995	\$33,595	\$1,200		
				15% Advance Payment Bonus Fare	\$12,490	\$13,255	\$14,020	\$16,995	\$28,555		28-Jul-01	
				10% Early Booking Incentive Fare	\$13,225	14,035	\$14,845	\$17,995	\$30,235		26-Sep-01	
Feb 9	10	5202	Rio de Janeiro, Ilha Grande ¹ , Parati, Rio de Janeiro ¹ (Carnival), Florianopolis, Punta del Este, Montevideo ¹ , Buenos Aires ¹	Published Fare	\$9,495	\$10,095	\$10,595	\$12,745	\$20,895	\$1,400		
				15% Advance Payment Bonus Fare	\$8,070	\$8,580	\$9,005	\$10,833	\$17,760		13-Aug-01	
				10% Early Booking Incentive Fare	\$8,545	\$9,085	\$9,535	\$11,470	\$18,805		12-Oct-01	
Feb 19	16	5203	Buenos Aires ¹ , Puerto Madryn, Punta Arenas ¹ , Ushuaia, Cruise Chilean Fjords, Puerto Montt, Valparaíso	Published Fare	\$14,295	\$15,195	\$15,995	\$19,395	\$32,395	\$1,400		
				15% Advance Payment Bonus Fare	\$12,150	\$12,915	\$13,595	\$16,485	\$27,535		23-Aug-01	
				10% Early Booking Incentive Fare	\$12,865	\$13,675	\$14,395	\$17,455	\$29,155		22-Oct-01	
Mar 7	13	5204	Valparaíso ¹ , Coquimbo, Callao ¹ , Golfito, Puntarenas ¹	Published Fare	\$10,695	\$11,395	\$11,995	\$14,545	\$24,095	\$1,200		
				15% Advance Payment Bonus Fare	\$9,090	\$9,685	\$10,195	\$12,363	\$20,480		08-Sep-01	
				10% Early Booking Incentive Fare	\$9,625	\$10,255	\$10,795	\$13,090	\$21,685		07-Nov-01	
Mar 20	8	5205	Puntarenas, Panama Canal Transit, Cristóbal ¹ , Bridgetown	Published Fare	\$6,845	\$7,345	\$7,745	\$9,345	\$15,545	\$750		
				15% Advance Payment Bonus Fare	\$5,818	\$6,243	\$6,583	\$7,943	\$13,213		21-Sep-01	
				10% Early Booking Incentive Fare	\$6,160	\$6,610	\$6,970	\$8,410	\$13,990		20-Nov-01	
Mar 28	8	5206	Bridgetown, Castries ¹ , Fort-de-France, Gustavia, Fort Lauderdale ¹	Published Fare	\$6,095	\$6,495	\$6,895	\$8,395	\$13,995	\$500		
				15% Advance Payment Bonus Fare	\$5,180	\$5,520	\$5,860	\$7,135	\$11,895		29-Sep-01	
				10% Early Booking Incentive Fare	\$5,485	\$5,845	\$6,205	\$7,555	\$12,595		28-Nov-01	
Apr 7	11	5208	Nassau, Charleston, Norfolk, Baltimore ¹ , Boston ¹ , Cape Cod Canal Transit, Newport ¹ , New York	Published Fare	\$8,595	\$9,095	\$9,695	\$11,845	\$19,895	\$500		
				15% Advance Payment Bonus Fare	\$7,305	\$7,730	\$8,240	\$10,068	\$16,910		09-Oct-01	
				10% Early Booking Incentive Fare	\$7,735	\$8,185	\$8,725	\$10,660	\$17,905		08-Dec-01	
Apr 18	14	5209	New York ¹ , Hamilton, Ponta Delgada, Lisbon ¹	Published Fare	\$10,695	\$11,395	\$12,095	\$14,795	\$24,995	\$500		
				15% Advance Payment Bonus Fare	\$9,090	\$9,685	\$10,280	\$12,575	\$21,245		20-Oct-01	
				10% Early Booking Incentive Fare	\$9,625	\$10,225	\$10,885	\$13,315	\$22,495		19-Dec-01	
May 2	13	5210	Lisbon, Cádiz ¹ , Barcelona ¹ , Corfu ¹ , Dubrovnik ¹ , Venice ¹	Published Fare	\$11,395	\$12,095	\$12,795	\$15,545	\$25,895	\$1,100		
				15% Advance Payment Bonus Fare	\$9,685	\$10,280	\$10,875	\$13,213	\$22,010		03-Nov-01	
				10% Early Booking Incentive Fare	\$10,255	\$10,885	\$11,515	\$13,990	\$23,305		02-Jan-02	
May 15	9	5211	Venice ² , Taormina ¹ , Cannes ² (Film Festival)	Published Fare	\$8,495	\$8,995	\$9,495	\$11,445	\$18,895	\$1,100		
				15% Advance Payment Bonus Fare	\$7,220	\$7,645	\$8,070	\$9,728	\$16,060		16-Nov-01	
				10% Early Booking Incentive Fare	\$7,645	\$8,095	\$8,545	\$10,300	\$17,005		15-Jan-02	
May 24	15	5212	Cannes, Monte Carlo ¹ (Grand Prix), St. Tropez ¹ , Portofino, Portovenere ¹ , Livorno ¹ , Sorrento ² , Capri, Siracusa ¹ , Valletta	Published Fare	\$13,495	\$14,295	\$15,095	\$18,345	\$30,795	\$1,100		
				15% Advance Payment Bonus Fare	\$11,470	\$12,150	\$12,830	\$15,593	\$26,175		25-Nov-01	
				10% Early Booking Incentive Fare	\$12,145	\$12,865	\$13,585	\$16,510	\$27,715		24-Jan-02	
June 8	9	5213	Valletta ¹ , Mahón, Palma de Mallorca ¹ , Tarragona, Málaga, Casablanca	Published Fare	\$8,095	\$8,495	\$8,995	\$10,845	\$17,795	\$1,100		
				15% Advance Payment Bonus Fare	\$6,880	\$7,220	\$7,645	\$9,218	\$15,125		10-Dec-01	
				10% Early Booking Incentive Fare	\$7,285	\$7,645	\$8,095	\$9,760	\$16,015		08-Feb-02	
June 17	12	5214	Casablanca ¹ , Oporto (Leixões), Bordeaux ² , St. Malo ¹ , St. Peter Port, Paris (Rouen)	Published Fare	\$10,395	\$10,995	\$11,595	\$14,095	\$23,395	\$1,100		
				15% Advance Payment Bonus Fare	\$8,835	\$9,345	\$9,855	\$11,980	\$19,885		19-Dec-01	
				10% Early Booking Incentive Fare	\$9,355	\$9,895	\$10,435	\$12,685	\$21,055		17-Feb-02	
June 29	5	5215	Paris (Rouen ¹), Honfleur, Dover	Published Fare	\$4,995	\$5,295	\$5,595	\$6,595	\$10,495	\$1,100		
				15% Advance Payment Bonus Fare	\$4,245	\$4,500	\$4,755	\$5,605	\$8,920		31-Dec-01	
				10% Early Booking Incentive Fare	\$4,495	\$4,765	\$5,035	\$5,935	\$9,445		01-Mar-02	

[†]Cruise-only allowance is deducted from the published fare prior to taking savings.

RESIDENSEA ALL-INCLUSIVE VALUE

Your air/sea cruise fare on *The World* covers roundtrip air from select designated North America gateway cities, transfers, all suite accommodations (over 80% with private verandas), all onboard meals, select wines, champagnes, spirits, sodas and bottled water throughout the ship, all onboard gratuities and port charges.

1 – Overnight stay 2 – Two night stay 3 – Three night stay

Air/sea fares quoted in US dollars are per person, based on double occupancy. A limited number of suites are available for purchase on a single or third guest occupancy basis and are capacity controlled. A limited number of suites are available on segmented voyages.

Segments are capacity controlled. The fare for single occupancy ranges from 110% to 200% of the listed fare, depending upon sailing and suite selected. Rates are subject to change and based on availability. For full terms and conditions see page 16 and 17. For additional information, contact your Travel Professional. * (APB) Advance Payment Bonus, and (EBI) Early Booking Incentive, see page 20 for details.

2002 | ITINERARIES

DATE	DAYS	ITINERARY NUMBER	PORTS		ADAGIO SUITES	LIBRETTO SUITES	CONCERTO SUITES	SONATA SUITES	RHAPSODY SUITES	CRUISE-ONLY ALLOWANCE ¹	15% APB* EXPIRATION DATE	10% EBI* EXPIRATION DATE
July 4	14	5216	London (Dover), Bergen, Flâm, Gudvangen, Cruise Norwegian Fjords, Harstad, Hammerfest, Honningsvåg ¹ , Tromsø, Ålesund, Geiranger, Edinburgh (Leith)	Published Fare	\$13,995	\$14,895	\$15,695	\$18,995	\$31,995	\$1,200		
				15% Advance Payment Bonus Fare	\$11,895	\$12,660	\$13,340	\$16,145	\$27,195	05-Jan-02		
				10% Early Booking Incentive Fare	\$12,595	\$13,405	\$14,125	\$17,095	\$28,795		06-Mar-02	
July 18	7	5217	Edinburgh (Leith) ¹ (British Open), Oslo ¹ , Copenhagen	Published Fare	\$7,795	\$8,295	\$8,695	\$10,395	\$17,095	\$1,200		
				15% Advance Payment Bonus Fare	\$6,625	\$7,050	\$7,390	\$8,835	\$14,530	19-Jan-02		
				10% Early Booking Incentive Fare	\$7,015	\$7,465	\$7,825	\$9,355	\$15,385		20-Mar-02	
July 25	11	5218	Copenhagen ¹ , Tallinn, St. Petersburg ² , Stockholm ¹ , Kiel Canal Transit, Hamburg ¹	Published Fare	\$11,195	\$11,895	\$12,595	\$15,145	\$25,295	\$1,200		
				15% Advance Payment Bonus Fare	\$9,515	\$10,110	\$10,705	\$12,873	\$21,500	26-Jan-02		
				10% Early Booking Incentive Fare	\$10,075	\$10,705	\$11,335	\$13,630	\$22,765		27-Mar-02	
Aug 5	15	5219	Hamburg ¹ , Honfleur, Cobh (Cork), Waterford ¹ , Belfast ¹ , Portree, Invergordon, Stornoway, Londonderry ¹ , Dublin	Published Fare	\$14,895	\$15,795	\$16,795	\$20,245	\$34,095	\$1,200		
				15% Advance Payment Bonus Fare	\$12,660	\$13,425	\$14,275	\$17,208	\$28,980	06-Feb-02		
				10% Early Booking Incentive Fare	\$13,405	\$14,215	\$15,115	\$18,220	\$30,685		07-Apr-02	
Aug 20	15	5220	Dublin ¹ , Thorshavn, Reykjavik ¹ , St. John's, Halifax, Boston ¹	Published Fare	\$11,745	\$12,445	\$13,145	\$16,145	\$27,145	\$750		
				15% Advance Payment Bonus Fare	\$9,983	\$10,578	\$11,173	\$13,723	\$23,073	21-Feb-02		
				10% Early Booking Incentive Fare	\$10,570	\$11,200	\$11,830	\$14,530	\$24,430		22-Apr-02	
Sept 4	13	5221	Boston, Cape Cod Canal Transit, New York ¹ , Newport ¹ , Cape Cod Canal Transit, Portland, Charlottetown, Québec City ² , Montréal	Published Fare	\$11,395	\$12,195	\$12,895	\$15,745	\$26,795	\$500		
				15% Advance Payment Bonus Fare	\$9,685	\$10,365	\$10,960	\$13,383	\$22,775	08-Mar-02		
				10% Early Booking Incentive Fare	\$10,255	\$10,975	\$11,605	\$14,170	\$24,115		07-May-02	
Sept 17	16	5222	Montréal ¹ , Québec City, Corner Brook, St. Pierre, Sydney, Halifax, Bar Harbor, Cape Cod Canal Transit, Oak Bluffs (Martha's Vineyard) ¹ , New York ²	Published Fare	\$13,995	\$14,895	\$15,795	\$19,295	\$32,895	\$500		
				15% Advance Payment Bonus Fare	\$11,895	\$12,660	\$13,425	\$16,400	\$27,960	21-Mar-02		
				10% Early Booking Incentive Fare	\$12,595	\$13,405	\$14,215	\$17,365	\$29,605		20-May-02	
Oct 3	15	5223	New York ¹ , Philadelphia, Yorktown, Baltimore ¹ , Savannah, Amelia Island ¹ , Palm Beach ¹ , Miami ¹ , Port Lucaya, Nassau	Published Fare	\$11,495	\$12,195	\$12,895	\$15,895	\$26,895	\$500		
				15% Advance Payment Bonus Fare	\$9,770	\$10,365	\$10,960	\$13,510	\$22,860	06-Apr-02		
				10% Early Booking Incentive Fare	\$10,345	\$10,975	\$11,605	\$14,305	\$24,205		05-Jun-02	
Oct 18	12	5224	Nassau, Key West ¹ , Cozumel ¹ , George Town, San Juan, Road Town, St. John's ¹	Published Fare	\$9,195	\$9,795	\$10,395	\$12,695	\$21,395	\$500		
				15% Advance Payment Bonus Fare	\$7,815	\$8,325	\$8,835	\$10,790	\$18,185	21-Apr-02		
				10% Early Booking Incentive Fare	\$8,275	\$8,815	\$9,355	\$11,425	\$19,255		20-Jun-02	
Oct 30	9	5225	St. John's ¹ , Basseterre ¹ , Charlestown, Marigot, Portsmouth ¹ , Roseau, Tobago Cays, Bridgetown ¹	Published Fare	\$6,995	\$7,495	\$7,895	\$9,645	\$16,195	\$500		
				15% Advance Payment Bonus Fare	\$5,945	\$6,370	\$6,710	\$8,198	\$13,765	03-May-02		
				10% Early Booking Incentive Fare	\$6,295	\$6,745	\$7,105	\$8,680	\$14,575		02-Jul-02	
Nov 8	10	5226	Bridgetown, Bequia ¹ , St. George's ¹ , Port of Spain, La Guaira, Bonaire, Oranjestad ¹	Published Fare	\$7,895	\$8,395	\$8,795	\$10,795	\$18,095	\$600		
				15% Advance Payment Bonus Fare	\$6,710	\$7,135	\$7,475	\$9,175	\$15,380	12-May-02		
				10% Early Booking Incentive Fare	\$7,105	\$7,555	\$7,915	\$9,715	\$16,285		11-Jul-02	
Nov 18	12	5227	Oranjestad, Willemstad ¹ , Cartagena, Puerto Limon, San Blas Islands, Cristóbal, Panama Canal Transit, Coiba Island, Puerto Caldera ¹	Published Fare	\$9,895	\$10,495	\$11,095	\$13,595	\$22,895	\$600		
				15% Advance Payment Bonus Fare	\$8,410	\$8,920	\$9,430	\$11,555	\$19,460	22-May-02		
				10% Early Booking Incentive Fare	\$8,905	\$9,445	\$9,985	\$12,235	\$20,605		21-Jul-02	
Nov 30	11	5228	Puerto Caldera, Acapulco ¹ , Puerto Vallarta ¹ , Cabo San Lucas ¹ , San Diego	Published Fare	\$8,495	\$9,095	\$9,595	\$11,795	\$19,795	\$500		
				15% Advance Payment Bonus Fare	\$7,220	\$7,730	\$8,155	\$10,025	\$16,825	03-Jun-02		
				10% Early Booking Incentive Fare	\$7,645	\$8,185	\$8,635	\$10,615	\$17,815		02-Aug-02	
Dec 11	7	5229	San Diego, Ensenada, San Francisco ¹ , San Diego	Published Fare	\$5,595	\$5,895	\$6,295	\$7,645	\$12,695	\$500		
				15% Advance Payment Bonus Fare	\$4,755	\$5,010	\$5,350	\$6,498	\$10,790	14-Jun-02		
				10% Early Booking Incentive Fare	\$5,035	\$5,305	\$5,665	\$6,880	\$11,425		13-Aug-02	
Dec 19	14	5230	Ensenada, Hilo ¹ , Lahaina, Nawiliwili ¹ , Honolulu ¹	Published Fare	\$12,595	\$13,295	\$14,095	\$17,095	\$28,595	\$1,100		
				15% Advance Payment Bonus Fare	\$10,705	\$11,300	\$11,980	\$14,530	\$24,305	22-Jun-02		
				10% Early Booking Incentive Fare	\$11,335	\$11,965	\$12,685	\$15,385	\$25,735		21-Aug-02	

january 2002

itinerary 5201

			Arrive	Depart
24	Th	Lisbon, Portugal		Midnight
25	F	Cruising the Atlantic Ocean		
26	S	Funchal, Madeira (Portugal)	10:30am	Overnight
27	Su	Funchal, Madeira (Portugal)		2pm
28	M	St. Cruz de Tenerife, Canary Islands (Spain)	9am	Midnight
29	T	Las Palmas, Canary Islands (Spain)	8:30am	Overnight
30	W	Las Palmas, Canary Islands (Spain)		1pm
31	Th	Cruising the Atlantic Ocean		

february

1-7	F-Th	Cruising the Atlantic Ocean		
8	F	Rio de Janeiro, Brazil	Noon	Overnight
9	S	Rio de Janeiro, Brazil		

itinerary 5202

9	S	Rio de Janeiro, Brazil		Midnight
10	Su	Ilha Grande, Brazil	8am	Overnight
11	M	Ilha Grande, Brazil Parati, Brazil Rio de Janeiro, Brazil	9am 11pm	6am 4pm Overnight
12	T	Rio de Janeiro, Brazil		Midnight
13	W	Cruising the South Atlantic Ocean		
14	Th	Florianopolis, Brazil	8am	4pm
15	F	Cruising the Brazilian Coast		
16	S	Punta del Este, Uruguay Montevideo, Uruguay	8am 8pm	2pm Overnight
17	Su	Montevideo, Uruguay		6pm
18	M	Buenos Aires, Argentina	8am	Overnight
19	T	Buenos Aires, Argentina		

itinerary 5203

19	T	Buenos Aires, Argentina		Overnight
20	W	Buenos Aires, Argentina		Midnight
21-22	Th-F	Cruising Rio de la Plata		
23	S	Puerto Madryn, Argentina	8am	Midnight
24-25	Su-M	Cruising the Patagonia Coast		
26	T	Punta Arenas, Chile	8am	Overnight
27	W	Punta Arenas, Chile		5pm
28	Th	Cruising Cape Horn Cruising the Chilean Fjords		

march

1	F	Ushuaia, Argentina	8am	6pm
2-4	S-M	Cruising the Chilean Fjords		
5	T	Puerto Montt, Chile	8am	4pm
6	W	Cruising the Pacific Ocean		
7	Th	Valparaíso, Chile	8am	

itinerary 5204

7	Th	Valparaíso, Chile		Overnight
8	F	Valparaíso, Chile		5pm
9	S	Coquimbo, Chile	8am	4pm
10-11	Su-M	Cruising the Pacific Ocean		
12	T	Callao, Peru	2pm	Overnight

13	W	Callao, Peru		Overnight
14	Th	Callao, Peru		Overnight
15	F	Callao, Peru		6pm
16-18	S-M	Cruising the Pacific Ocean		
19	T	Golfito, Costa Rica	8am	5pm
20	W	Puntarenas, Costa Rica	8am	

itinerary 5205

20	W	Puntarenas, Costa Rica		Overnight
21	Th	Puntarenas, Costa Rica		Midnight
22	F	Cruising the Pacific Ocean		
23	S	Panama Canal Transit Cristóbal, Panama	8am 11pm	8pm Overnight
24	Su	Cristóbal, Panama		6pm
25-27	M-W	Cruising the Caribbean Sea		
28	Th	Bridgetown, Barbados	7am	

itinerary 5206

28	Th	Bridgetown, Barbados		Midnight
29	F	Castries, St. Lucia	9am	Overnight
30	S	Castries, St. Lucia		Midnight
31	Su	Fort-de-France, Martinique	8am	8pm

april

1	M	Gustavia, St. Bart's	Noon	7pm
2-3	T-W	Cruising the Caribbean Sea		
4	Th	Fort Lauderdale, Florida	6pm	Overnight
5	F	Fort Lauderdale, Florida		Midnight

Cruise may also be purchased as a 10-day voyage to Nassau

itinerary 5208

7	Su	Nassau, Bahamas		6pm
8	M	Cruising the Florida Coast		
9	T	Charleston, South Carolina	8am	Midnight
10	W	Cruising the Atlantic Ocean		
11	Th	Norfolk, Virginia	8am	7pm
12	F	Baltimore, Maryland	8am	Overnight
13	S	Baltimore, Maryland		Noon
14	Su	Cruising the Atlantic Ocean		
15	M	Boston, Massachusetts	8am	Overnight
16	T	Boston, Massachusetts Cape Cod Canal Transit Newport, Rhode Island	6pm 11pm	2pm 7pm Overnight
17	W	Newport, Rhode Island		8pm
18	Th	New York, New York	8am	

itinerary 5209

18	Th	New York, New York		Overnight
19	F	New York, New York		Midnight
20-21	S-Su	Cruising the Atlantic Ocean		
22	M	Hamilton, Bermuda	8am	6pm
23-27	T-S	Cruising the Atlantic Ocean		
28	Su	Ponta Delgada, Azores (Portugal)	8am	Midnight
29-30	M-T	Cruising the Atlantic Ocean		

may

1	W	Lisbon, Portugal	8am	Overnight
---	---	------------------	-----	-----------

itinerary 5210

2	Th	Lisbon, Portugal		3pm
3	F	Cádiz, Spain	10am	Overnight
4	S	Cádiz, Spain		6pm
5	Su	Cruising Gibraltar and the Alboran Sea		
6	M	Barcelona, Spain	8am	Overnight
7	T	Barcelona, Spain		Midnight
8-9	W-Th	Cruising the Mediterranean Sea		
10	F	Corfu, Greece	Noon	Overnight
11	S	Corfu, Greece		6pm
12	Su	Dubrovnik, Croatia	8am	Overnight
13	M	Dubrovnik, Croatia		6pm
14	T	Venice, Italy	4pm	Overnight
15	W	Venice, Italy		

itinerary 5211

15	W	Venice, Italy		Overnight
16	Th	Venice, Italy		Overnight
17	F	Venice, Italy		5pm
18	S	Cruising the Adriatic Sea and Ionian Sea		
19	Su	Taormina, Italy	Noon	Overnight
20	M	Taormina, Italy		Midnight
21	T	Cruising the Tyrrhaean Sea		
22	W	Cannes, France	Noon	Overnight
23	Th	Cannes, France		Overnight
24	F	Cannes, France		Overnight

itinerary 5212

24	F	Cannes, France		Midnight
25	S	Monte Carlo, Monaco	7am	Overnight
26	Su	Monte Carlo, Monaco		Midnight
27	M	St. Tropez, France	8am	Overnight
28	T	St. Tropez, France		10pm
29	W	Portofino, Italy	8am	4pm
30	Th	Portovenere, Italy	8am	11pm
31	F	Livorno, Italy	8am	Overnight

june

1	S	Livorno, Italy		Midnight
2	Su	Cruising the Tuscany Islands		
3	M	Sorrento, Italy	8am	Overnight
4	T	Sorrento, Italy		Overnight
5	W	Sorrento, Italy		7am
5	W	Capri, Italy	9am	6pm
6	Th	Siracusa, Sicily (Italy)	1pm	Overnight
7	F	Siracusa, Sicily (Italy)		11pm
8	S	Valletta, Malta	8am	

itinerary 5213

8	S	Valletta, Malta		Overnight
9	Su	Valletta, Malta		6pm
10	M	Cruising the Mediterranean Sea		
11	T	Mahón, Minorca (Spain)	8am	Midnight
12	W	Palma de Mallorca, Spain	9am	Overnight
13	Th	Palma de Mallorca, Spain		Midnight
14	F	Tarragona, Spain	10am	11pm

15	S	Cruising the Balearic Sea		
16	Su	Málaga, Spain	8am	7pm
17	M	Casablanca, Morocco		2pm

itinerary 5214

17	M	Casablanca, Morocco		Overnight
18	T	Casablanca, Morocco		Midnight
19	W	Cruising the Atlantic Ocean		
20	Th	Oporto (Leixões), Portugal	8am	5pm
21	F	Cruising the Bay of Biscay		
22	S	Bordeaux, France	5am	Overnight
23	Su	Bordeaux, France		Overnight
24	M	Bordeaux, France		6pm
25	T	Cruising the Bretagne Coast		
26	W	St. Malo, France	8am	Overnight
27	Th	St. Malo, France		Midnight
28	F	St. Peter Port, Guernsey (U.K.)	8am	4pm
29	S	Paris (Rouen), France		9am

itinerary 5215

29	S	Paris (Rouen), France		Overnight
30	Su	Paris (Rouen), France		Overnight

july

1	M	Paris (Rouen), France		Overnight
2	T	Paris (Rouen), France		11:30pm
3	W	Honfleur, France	8am	8pm
4	Th	London (Dover), U.K.	8am	

itinerary 5216

4	Th	London (Dover), U.K.		6pm
5	F	Cruising the North Sea		
6	S	Bergen, Norway	10am	Midnight
7	Su	Flåm (Sognefjorden), Norway Gudvangen (Sognefjorden), Norway	10am	Noon 2pm 6pm
8-9	M-T	Cruising the Norwegian Fjords		
10	W	Harstad, Norway	8am	5pm
11	Th	Hammerfest, Norway Honningsvåg (North Cape), Norway	8am	1pm 6pm Overnight
12	F	Honningsvåg (North Cape), Norway		4pm
13	S	Tromsø, Norway	8am	Midnight
14	Su	Cruising the Norwegian Fjords		
15	M	Ålesund, Norway	1pm	Midnight
16	T	Geiranger, Norway	8am	3pm
17	W	Cruising the North Sea		
18	Th	Edinburgh (Leith), Scotland	9:30am	



Hammerfest • Honningsvåg
Tromsø
• Harstad

Reykjavik •

Thorshavn •

Ålesund • Geiranger

Bergen • Flåm/Gudvangen • St. Petersburg

Stornoway • Portree • Invergordon • Oslo • Tallinn

Londonderry • Edinburgh • Copenhagen

Belfast • (Leith)

Dublin • Hamburg •

Cobh • London • Dover

St. Peter Port • Honfleur • Rouen

St. Malo • Paris

Bordeaux • Monte Carlo • Venice

Oporto (Leixões) • Tarragona • Barcelona • Dubrovnik

Ponta Delgada • Lisbon • Marón • Sorrento • Amalfi

Cádiz • Málaga • Palma de Mallorca • Corfu

• Casablanca • Valletta

St. Cruz de Tenerife • Funchal

• Las Palmas

Corner Brook •

Québec City • St. Pierre • St. John's

Montréal • Charlottetown • Sydney

Bar Harbor • Halifax

Newport • Portland • Boston

New York • Oak Bluffs

Baltimore • Philadelphia

Yorktown • Norfolk

San Francisco •

Ensenada • San Diego

• Charleston

• Savannah • Hamilton

• Amelia Island

Cabo San Lucas •

Palm Beach • Fort Lauderdale

Miami • Port Lucaya

Key West • Nassau

Honolulu • Lahaina

• Hilo

• Puerto Vallarta • Cozumel

George Town • San Juan

Acapulco • Fort-de-France • St. John's

Castries • Bridgetown

Puerto Caldera • San Blas Islands • St. George's

Puntarenas • Cartagena

• Cristóbal

Golfito

• Callao

Rio de Janeiro

Ilha Grande • Parati

• Coquimbo

• Florianópolis

Valparaíso •

Buenos Aires •

Montevideo

Punta del Este

Puerto Montt •

• Puerto Madryn

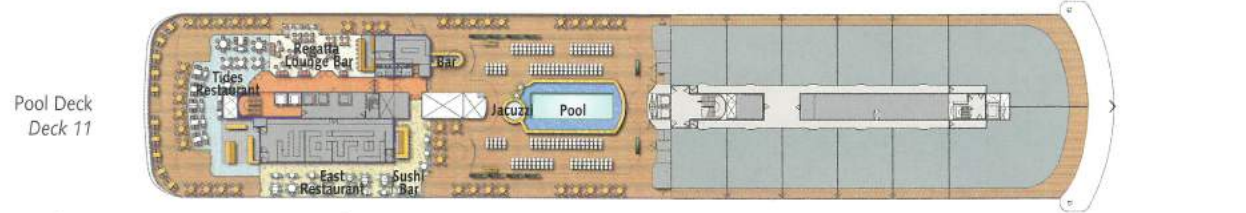
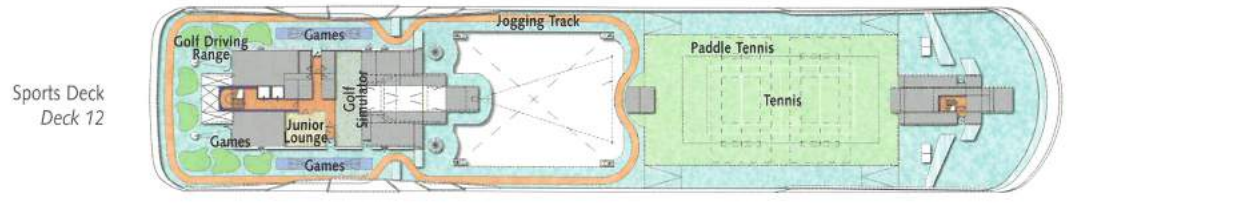
• Punta Arenas

• Ushuaia

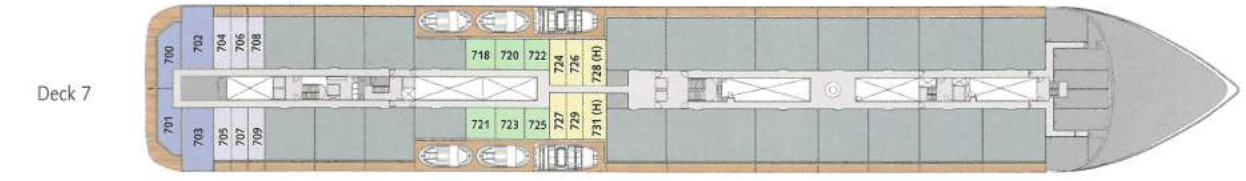
Not all ports are indicated on map. Please refer to itineraries for a complete listing.

2002 | DECK PLANS

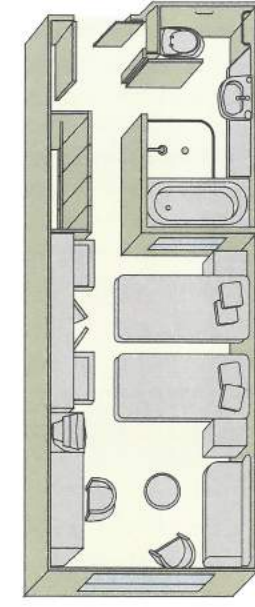
Adagio Suites	Built	2002
Concerto Suites	Registry	Bahamas
Rhapsody Suites	Crew	340
Sonata Suites	Officers	Scandinavian
Libretto Suites	Tonnage	40,000
Residences	Residents & Guests	320
	Length	644 ft. (196m)
	Width	97.8 ft. (29.8m)
	Speed	19 knots



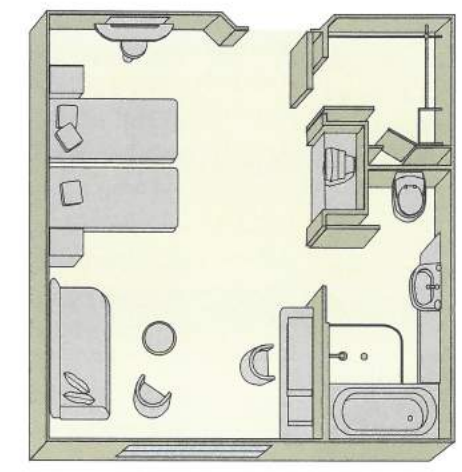
Deck 8-11 are Private Residences



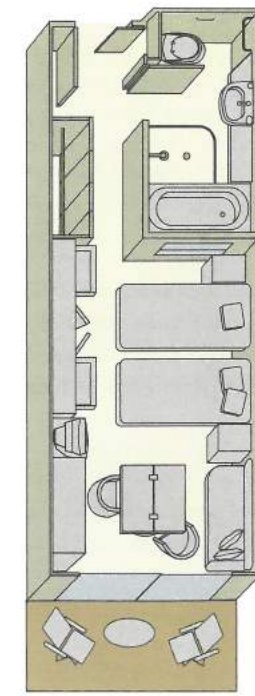
2002 | SUITE PLANS



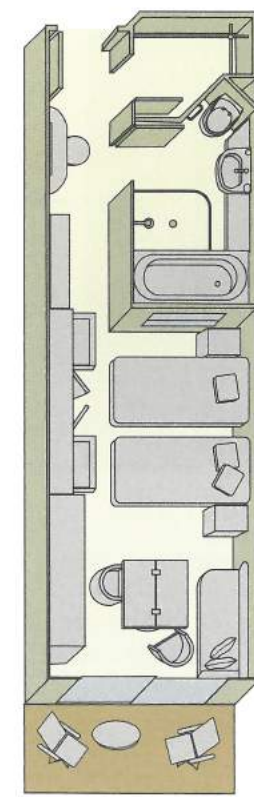
Adagio Suite (259-325 Sq F)
(24-30 m²)



Libretto Suite (271-309 Sq F)
(25-28 m²)



Concerto Suite (294-319 Sq F)
(27-29 m²)



Sonata Suite (328-348 Sq F)
(30-32 m²)

The World features 88 guest suites, 84% with private veranda, and most with spacious walk-in closets. Ranging in size from 259 to 648 square feet, all suites have the following features in common: two twin beds or queen-size bed, sitting area, entertainment center with remote-controlled television with satellite reception, videocassette player, direct dial telephone, refrigerator, cocktail cabinet, writing desk, personal safe, dressing table with hair dryer, and marble bathroom with separate shower and tub (except handicap suites).

Adagio
There are a total of eight Adagio Suites, each with a large picture window. Six Adagio Suites are located on Deck 7. Four have a standard closet and limited view due to Deck 7 lifeboat position. The remaining two Deck 6 suites are handicap suites and feature a walk-in closet.

Libretto
The six Libretto Suites are located on Deck 7. All have a large picture window (limited view due to lifeboat position) and a walk-in closet.

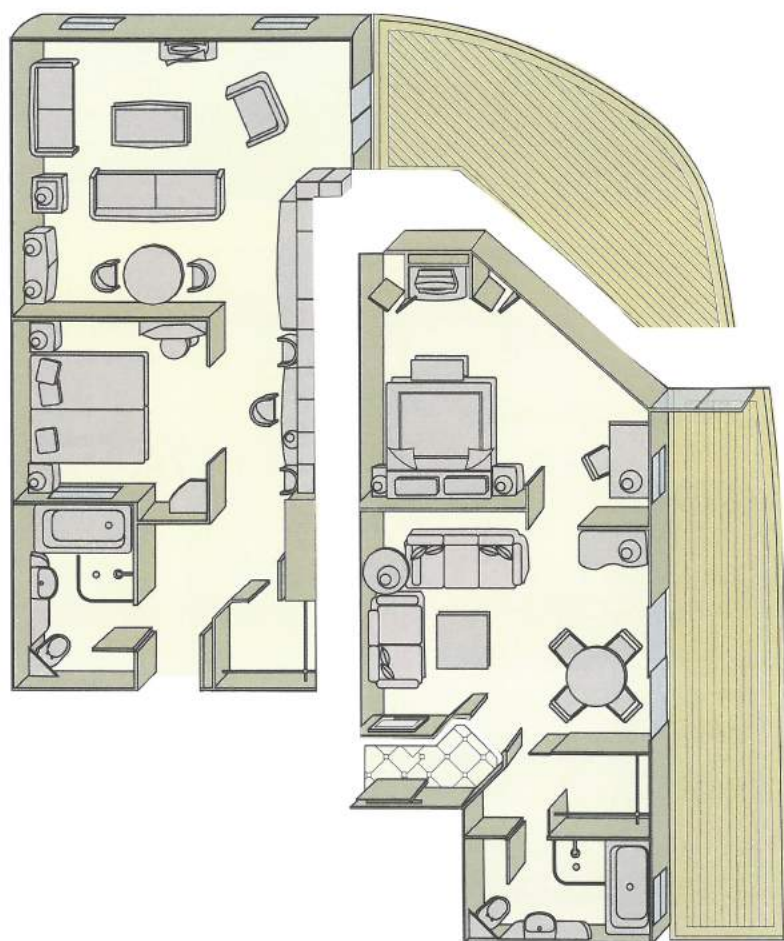
Concerto
18 Concerto Suites with veranda and standard closet are situated on Deck 6 from midship to forward.

Sonata
The 52 Sonata Suites have a veranda and walk-in closet. Six Sonata Suites are located on Deck 7, the remaining, 46 are situated on Deck 6. Suites 608/610, 654/656, 655/657 have a connecting door.

Suite diagrams and suite categories are subject to change.

The grandest suites of all, the four Rhapsody Suites on *The World* were created by the four internationally-prominent designers of the ship's residences. All feature a large veranda with whirlpool, walk-in closet and separate living room and bedroom. Like the other suite categories, Rhapsody Suites have: two twin beds or queen-size bed, entertainment center with remote-controlled television with satellite reception, videocassette player, direct dial telephone, refrigerator, cocktail cabinet, writing desk, personal safe, dressing table with hair dryer, and marble bathroom with separate shower and tub.

Rhapsody Suite (598-648 Sq F)(54-59 m²)
Suite 700/701
(veranda whirlpool not shown)



Rhapsody Suite (598-648 Sq F)(54-59 m²)
Suite 702/703
(veranda whirlpool not shown)

Each Rhapsody Suite reflects a design theme created by one of the four signature designers for the ship's residences.

Nina Campbell: Traditional Comfort (Suite 700)

This well-known London designer has created a style that is effortlessly elegant yet warm and inviting. Dignified stripes pair with cheerful florals and patterned carpets. Rich woods, classic paneling and deeply comfortable furniture contribute to an interior that has timeless elegance.

Juan Pablo Molyneux: Continental (Suite 701)

New York-based Molyneux masterfully combines tasteful antiques with sumptuous fabrics to create a suite that could be in an international city like Rome, Hong Kong or Monte Carlo. The design includes stone floors and upholstered walls, Baltic, Russian and French-style furniture, mixed with Chinese lacquer.

Yran & Storbraaten: Maritime (Suite 702)

Petter Yran and Bjorn Storbraaten are designers of the most luxurious ships on the high seas, including *The World*. Not surprisingly, their interior design has a maritime feel. Neatly detailed wood furnishings carry a strong reference to the world of old yachts, with modern detailing lending a contemporary flair.

Luciano Di Pilla: Classic Contemporary (Suite 703)

Light and a sense of space, hallmarks of contemporary design, are very much in evidence in the suite designed by Rome-based Di Pilla. The furniture, fabrics, lighting and colors were selected for their innate capacity to blend into a harmonious whole.

Optional Travel Insurance Program

For your convenience, *The World* of ResidenSea makes available an optional travel protection plan designed especially for our guests.

The adjacent information is a summary of benefits and services and is subject to change. A brochure detailing the coverage terms and conditions, including the pre-existing condition exclusion and other applicable limitations, will be sent with your Pre-Cruise Packet prior to sailing. Each of the benefits is subject to the limits listed on the Schedule of Coverage and Services as shown and are subject to change.

Trip Cancellation & Interruption Protection

If you were to have to cancel or interrupt your cruise for covered reasons (such as an unforeseen medical condition affecting you, your traveling companion, or an immediate family member), you would be reimbursed for covered cancellation penalties and/or the value of the unused portion of your trip and other covered expenses, up to your full cruise vacation cost.

Trip Delay

If you were to miss the departure of your cruise due to weather-related flight cancellations, equipment failure of an aircraft, or other covered reasons, you would be reimbursed for reasonable additional expenses for accommodations, meals, and one-way economy air ticket.

Accident and Sickness Medical Expenses & Emergency Evacuation

If you were to experience a covered sickness or injury during your cruise vacation, you would be reimbursed for your covered medical expenses. In addition, *The World* of ResidenSea Travel Insurance Program would also arrange for, and pay the cost of, emergency air or ground ambulance transportation in the event of a medical emergency. These are especially valuable benefits because Medicare and many private insurance policies generally do not cover medical expenses incurred overseas.

Baggage & Personal Effects Protection

If your baggage or its contents were to be lost, stolen, or damaged, you would be reimbursed for the cost of repair or replacement.

Baggage Delay

If your checked baggage were delayed for over 24 hours, the plan would reimburse you for your purchase of essential items.

Worldwide Travelers' Assistance

The World of ResidenSea Travel Insurance Program also provides a Travelers' Assistance Hotline offering 24-hour-a-day, worldwide access to a broad range of services.

Purchasing *The World* of ResidenSea Travel Insurance

The cost of this important protection will be conveniently added to your cruise invoice unless declined at time of booking or final payment. To receive this valuable protection, simply remit the amount indicated to your travel agent along with your cruise payment. The premium must be paid in order for the insurance to be effective. For more information and applicable plan costs, please consult your travel professional or refer to the pamphlet in your Pre-Cruise Package. *The World* of ResidenSea Travel Insurance Program is underwritten by National Union Fire Insurance Company of Pittsburgh, PA—Policy # 9500346R.

Executive offices: New York, NY, a Member Company of American International Group, and administered by BerkelyCare, Ltd. Assistance Services are provided by AXA Assistance, U.S.A. The Policy does NOT provide basic hospital, basic medical, or major medical insurance as defined by the New York State Insurance Department.

Schedule of Coverage & Services

Travel Arrangement Protection	
	Maximum limit (per person)
Trip Cancellation	Total Cruise Vacation Cost
Trip Interruption	Total Cruise Vacation Cost
Trip Delay	\$1,000
Medical Protection	
Emergency Evacuation	\$30,000
Accident Medical Expense	\$10,000
Sickness Medical Expense	\$10,000
Baggage Protection	
Baggage/Personal Effects	\$3,000
Baggage Delay	\$500
Worldwide Emergency Assistance	
Emergency Cash Transfer	
Emergency Legal Assistance	
Lost Travel Documents Assistance	
Medical Consultation and Monitoring	
Emergency Medical Payments Assistance	
Emergency Dental and Medical Assistance	

Travel insurance program is applicable to bookings made in the U.S. and for pre-planned voyages only. For details and terms and conditions pertaining to insurance for bookings outside the U.S., please call UK reservations at 44 (0) 870-333-7030. For details and terms and conditions pertaining to insurance for Tailored Time Fares™, please call 877-763-5314.

Terms and Conditions included here refer to bookings made in the U.S. and are for pre-planned voyages only. For terms and conditions for bookings outside the U.S. call either 954-759-5001 or our U.K. office at +44 (0) 870-333-7030. (See General Information for a complete listing of Gateway Cities.) For details and terms and conditions pertaining to Tailored Time Fares™, please call 877-763-5314. Tailored Time Fare™ program is subject to space availability.

Cruise Segments

A limited number of suites are available on segmented voyages. Segments are capacity controlled.

Rights Reserved and Limits of Responsibility

The World of ResidenSea's liability is limited to the terms and conditions of the Passage Contract, which is included with your final travel documents. A copy of the Passage Contract is also available upon request. Please note that acceptance of the Passage Contract represents acceptance of the conditions herein. Any and all information contained herein is in effect at the time of printing and is subject to change at any time.

The World of ResidenSea reserves the right to alter the ship's advertised route, to delay any sailing, or cancel scheduled ports of call as necessary. Additionally, we reserve the right to cancel reservations and bookings, whether or not a deposit has been received. In such event, our only liability will be to refund to the guest the amount we have received.

The World of ResidenSea makes arrangements for transportation, other than ocean passage, only as a booking agent. Therefore, our responsibility does not extend beyond the vessel. In arranging for the transportation of guests to and from the ship, we do so with independent contractors. Therefore, we cannot be responsible for incidents such as airline cancellations, re-routings or any disruption of scheduled services or accommodations.

Air/Sea Fare

Your air/sea fare covers most shipboard services including: suite accommodations, all onboard meals and entertainment and roundtrip economy air transportation from listed gateway cities in General Information.

Also included are all gratuities aboard ship, port charges, luggage handling, local airport taxes where applicable, complimentary beverages aboard ship (including select wines, champagnes and spirits) and transfers. All fares are quoted in U.S. dollars, are per guest and based on double occupancy. Air arrangements for air/sea cruise bookings made within 14 days of sailing departure will not be confirmed until full payment is received.

Not included in your air/sea fare are: optional shore excursions, meals ashore unless noted, accommodations while ashore, casino gaming, laundry or valet services, purchases from the ship shops and boutiques, child care, or any other item or service of a personal nature, such as massages, spa treatments, hair styling and manicures. Some premium wine, champagne and spirit selections are not included in your fare.

All prices indicated in this brochure are subject to change. APB and EBI are not combinable. Special programs on designated sailings are all subject to change and/or cancellation.

Cruise-Only Allowance

Guests independently making all necessary arrangements to and from the ship, including air and transfer arrangements, may deduct the applicable cruise-only allowance listed with each itinerary. The cruise-only allowance may be deducted only once, regardless of the number of consecutive cruises purchased. Third guests occupying a suite may also deduct the cruise-only allowance. Cruise-only rates are port-to-port and do not include ground transfers or other travel arrangements of any kind. The cruise-only allowance and/or combination cruise savings are deducted from the published fare prior to applying any applicable savings.

Combination Cruise Program

Combine two or more consecutive voyages and earn substantial savings. To calculate your combination cruise fare, simply add the air/sea fare for the first voyage to the air/sea fare for the subsequent voyage(s) being combined. Then, deduct the combination cruise savings for the subsequent voyages from the total. Please contact your travel professional for applicable savings. For the cruise-only combination fare, deduct the travel allowance specified for the first voyage from your air/sea combination fare.

Single and Third Guests

A limited number of suites are available for purchase on a single or third guest occupancy basis. The fare for single occupancy in an Adagio, Libretto or Concerto Suite ranges from 110% to 200% of the double occupancy fare, depending upon the sailing selected. Single occupancy for Sonata Suites ranges from 150% to 200%, and for the Rhapsody Suites is 200% of the double occupancy fare. Suites for single and third guests are capacity controlled. Rates are subject to change based on availability.

Payment Schedule

To reserve your vacation on *The World*, a 10% deposit of the total fare is required within seven (7) days of booking. Full payment is due no later than 90 days prior to departure. All reservations are subject to cancellation if payments are not received by the due date and are guaranteed only when paid in full 90 days prior to sailing. Payments may be made by check (U.S. funds), VISA, MasterCard, American Express or Diners Club.

Cancellations

Should it be necessary to cancel your reservation, please have your travel professional contact *The World of ResidenSea* Reservations Department by telephone as soon as possible and subsequently submit your cancellation in writing. All tickets must be returned to us before a refund can be processed. If your cancellation request is received more than 90 days prior to your initial sailing date, a full refund of the amount already paid will be made. Cancellation requests received within 90 days of the initial sailing date will be subject to the following charges, regardless of suite resale:

- 90-61 days prior to your initial sailing date: 10% of the total fare;
- 60-31 days prior to your initial sailing date: 20% of the total fare;
- 30-15 days prior to your initial sailing date: 50% of the total fare;
- 14-0 days prior to your initial sailing date, or non-appearance at the time of sailing: 100% of the total fare.

No refund or adjustment will be made in the event of interruption or cancellation of the cruise vacation after the commencement of same. Guests canceling land programs, hotel packages or pre-booked shore excursions within 30 days prior to departure are subject to 100% cancellation penalties. A \$100 per person administrative fee will be applied for all other changes made within 60 days of the sailing date.

Health/Disability Requirements

Certain medical and health conditions must be reported in writing to *The World of ResidenSea* when the reservation is made:

1. Any physical or mental condition that may require medical treatment or attention.
2. Any condition which may render the guest unfit for travel.
3. Any condition which may constitute a risk or danger to the guest or to anyone else on board the ship.
4. Any condition requiring oxygen for medical reasons.

Guests requiring special assistance because of physical disabilities must be accompanied by a non-disabled adult who will be able to assist them during the cruise, transfers, and in the event of an emergency. Guests requiring a wheelchair must provide their own collapsible wheelchair. We reserve the right to refuse passage to anyone who, in the opinion of the ship's operators, is in such physical or mental condition as to be incapable of an ocean voyage or who may require care beyond that which we can provide.

Luggage

You may bring aboard the ship a reasonable amount of clothing and personal effects without charge. Luggage for guests, or guests on land packages, must be handled in accordance with regulations and tariffs of airlines and/or ground operators. Luggage exceeding these limitations is subject to the charges as set forth by individual operators. All luggage must be securely packed and properly and clearly labeled. Liquid, fragile, perishable and other articles not suitably packed are transported at your own risk. We recommend that you hand carry travel documents (passport, visa, tickets), medications and valuables. These items are the full responsibility of the guest at all times. *The World of ResidenSea* shall not be responsible for the loss of or damage to such personal items. Luggage or personal belongings will be taken off the ship upon guest disembarkation. Under no circumstances will luggage be stored on board without the owner of such luggage being on the vessel.

Shore Excursions, Land Tours & Enrichment Programs

Shore excursions at most ports of call are offered for purchase on board, subject to availability. All shore excursions and land tours are operated by independent contractors and *The World of ResidenSea* acts only as an agent in booking them and shall not be responsible for any loss, injury or death arising out of any service provided. These independent contractors may impose additional limitations of liability. Lecturers and guest personalities are subject to change and/or cancellation. Some optional pre- and/or post-cruise tours, shore excursions, or special events are subject to cancellation if a minimum number of participants is not achieved.

Air Program

The World of ResidenSea's ability to offer air service from gateway cities is limited to airline scheduling and availability of negotiated airfares. Airfares negotiated by *The World of ResidenSea* limit your ability to exchange, endorse or make changes to air tickets. Seat assignments, special meals and frequent flyer miles are the sole responsibility of the guest. Some airlines restrict the accumulation or use of frequent flyer miles in conjunction with fares used by cruise lines. Any service charges imposed by the airline and loss of issued tickets will be your sole responsibility.

The World of ResidenSea will select and confirm air carriers and routings on the most direct flights available at our contract rates at the time of ticketing and reserves the right to substitute charter flights for scheduled service or vice versa; we also reserve the right to select the carrier, the routing and layover city if necessary. We suggest that you reconfirm your flights prior to departure. Airline tickets are refundable to *The World of ResidenSea* only. We are unable to make changes to air flights once travel has begun.

The World of ResidenSea is pleased to assist you with any special air requirements you may have, including First Class and Business Class Air upgrades as well as flight deviations. We ask that you send such inquiries to the Air Concierge Desk in writing before you make your final payment or at least 90 days prior to your air departure date. Guests are responsible for additional costs incurred for upgrades or flight deviations. An administrative fee of \$100 per guests will be charged for any flight changes received within 60 days of your air departure date. Changes to flight schedules may not be possible once travel has begun.

Should you choose to make your own air and transfer arrangements, you may deduct the Cruise-Only Travel Allowance amount from the air/sea fare listed. Air confirmations for air/sea cruise bookings made within 14 days of departure will not be confirmed until full payment is received. All flight deviations and special requests are subject to availability and confirmation. Guests requesting an air deviation on their return flight date will forfeit airport transfers. Guests deviating from their pre-cruise flight may forfeit transfers from the airport to the ship.

Travel Documents

All travel documents (air and cruise tickets, passport, medical card, inoculation verification) are your responsibility. It is also your responsibility to obtain any necessary visas and public health documents for all applicable ports and to comply with all customs requirements. Without the required documents, you may be denied boarding, and *The World of ResidenSea* will not be liable for such denial or bear any financial responsibility.

Security measures imposed by governments may change from time to time and you will be required to comply with them. We will endeavor to provide you with notice of measures which may affect you, but complying with any such requirements is your responsibility. Please consult your travel professional for advice on such requirements to avoid loss of boarding privileges.

All schedules, prices, and terms and conditions listed in this brochure are effective as of January 2001 and supersede any schedules, prices, and terms and conditions previously published.

Bon Voyage Parties/Visitors on Board

Please have your travel professional contact *The World of ResidenSea* Special Services Department if you would like to make arrangements for a Bon Voyage Party and/or to have visitors board the vessel at your embarkation port. Requests must be made in writing no later than 14 days prior to departure. For security reasons, visitors for embarkation day must be pre-registered with us. For visitors during the cruise other than embarkation day, our guests can make arrangements on board. We reserve the right to limit the number of visitors permitted on board.

Boutiques & Shops

The boutiques offer a selection of clothing as well as sundries. Toiletries and convenience items are also available for purchase. Graff Jewelers features one-of-a-kind jewelry. Shops are closed while in port and on occasion due to local government regulations.

Business Services

The World keeps you in touch while you're aboard. If you don't care to bring your own laptop computer, @Sea, the Internet café, has computers and email access. The conference center has state-of-the-art audio-visual communication facilities. Office machines plus secretarial services are available through the Concierge. Telefax reception is complimentary; ship-to-shore phone calls and fax transmissions are available at standard tariffs.

Casino Gaming

Roulette, blackjack and slot machines are available in the Casino for guests over 18 years of age. Cash advances on your credit card may be arranged in The Casino. The Casino may be closed on occasion due to local government regulations.

Clothing Suggestions

Shipboard attire ranges from casual to formal. Casual resort wear is appropriate for daytime aboard ship or ashore and consists of standard sports outfits as worn at resorts. Shoes should be flat or low heeled for deck activities. Evening attire falls into two categories: informal and formal, depending on your choice of restaurant each evening. For informal restaurants, open neck shirts and slacks are appropriate for men. Ladies usually wear dresses or pantsuits. For formal restaurants, appropriate evening wear for women is an evening gown or cocktail dress; men wear tuxedos, dinner jackets or dark suits.

Credit Cards and Currency

Any and all onboard payments to *The World of ResidenSea* shall be made in U.S. dollars. All charges for services provided and products purchased on board the ship must be in cash, check or charge (VISA, MasterCard, American Express or Diners Club) before your final disembarkation from the ship.

Dining on Board

The World features a world of choices when it comes to cuisines. In addition to the following four main restaurants, the ship has several casual venues – from The Garden Tea Room to poolside dining to a charming sidewalk deli.

Portraits: The most upscale restaurant on the ship, Portraits will feature a gourmet menu of French fusion cuisine in a classically inspired setting.

The Marina: The Marina Restaurant will showcase innovative cooking in an open kitchen concept where seafood, steaks and rotisserie specialties are prepared right before your eyes.

Tides: This ocean-view restaurant features Mediterranean cuisine with an Italian flair. The self-service concept allows guests to sample many dishes and experience new tastes.

East: An Asian restaurant and sushi bar at sea, East will serve authentic sushi, sashimi and tempura. Tables will be fitted with removable turntables for Asian-style dining.

Electrical Appliances

You will find 110- and 220-volt electric currents are provided on the ship. In each suite a hair dryer is provided at the dressing table. The onboard in-suite video system is in the multi-system format.

Embarkation/Disembarkation

Embarkation times are included in your final cruise documents. Please arrive at the ship during these times but no later than one hour prior to sailing. Early embarkation is not possible. For disembarkation, guests should plan on vacating their suites shortly after the scheduled arrival time.

Gateway Cities

EAST

Albany, NY	New York, NY
Atlanta, GA	Orlando, FL
Baltimore, MD	Philadelphia, PA
Boston, MA	Pittsburgh, PA
Buffalo, NY	Providence, RI
Charleston, SC	Raleigh, NC
Charlotte, NC	Richmond, VA
Ft. Lauderdale, FL*	Rochester, NY
Ft. Myers, FL	Savannah, GA
Greensboro, NC	Syracuse, NY
Hartford, CT	Tampa, FL
Jacksonville, FL	Washington, D.C.
Miami, FL	W. Palm Beach, FL*

*For the most direct air route, Miami may offer a more convenient flight schedule.

CENTRAL

Austin, TX	Lexington, KY
Birmingham, AL	Little Rock, AR
Chicago, IL	Louisville, KY
Cincinnati, OH	Memphis, TN
Cleveland, OH	Milwaukee, WI
Columbus, OH	Minneapolis, MN
Dallas, TX	Montréal, PQ
Des Moines, IA	Nashville, TN
Detroit, MI	New Orleans, LA
El Paso, TX	Oklahoma City, OK
Houston, TX	Omaha, NE
Indianapolis, IN	San Antonio, TX
Jackson, MS	St. Louis, MO
Kansas City, MO	Toronto, ON
Knoxville, TN	Tulsa, OK

Gateway Cities continued

WEST

Albuquerque, NM	Reno, NV
Anchorage, AK	Sacramento, CA
Calgary, AB	Salt Lake City, UT
Denver, CO	San Diego, CA
Edmonton, AB	San Francisco, CA
Honolulu, HI	Seattle, WA
Las Vegas, NV	Spokane, WA
Los Angeles, CA	Tucson, AZ
Phoenix, AZ	Vancouver, BC
Portland, OR	

Gratuities

All gratuities aboard ship are included in your fare; none are expected.

Itinerary Schedules

All itineraries listed in this brochure are subject to change without notice.

Laundry/Valet Services

Complete valet services, including laundry, pressing and dry cleaning are available with charge and may be arranged through your suite steward or stewardess. A self service laundry facility is also available.

Mail

Prior to your departure date, we will provide you with a list of port addresses where mail can be delivered to the ship during your journey. Postage and mailing services are available on board the ship.

Medical Services

Our vessel is equipped with a Medical Center and is staffed by a doctor and nurse on 24-hour call when at sea. The ship is equipped with a helipad for emergency evacuation. When docked, supplementary emergency care may also be obtained through local medical facilities. Guests may be charged for medical services and for medications used for their medical treatment. The Medical Center is not intended or designed to provide ongoing treatment of pre-existing conditions or for extended critical care, and *The World of ResidenSea* is not responsible for the diagnosis, treatment or services furnished by shipboard medical personnel. Guests requiring oxygen for medical reasons are welcome to bring an oxygen concentrator on board. Guests wishing to bring their own portable oxygen tanks must obtain prior written authorization from us, as restrictions may apply.

Pregnancy

At the time of booking, expectant mothers are required to supply a medical certificate establishing their fitness for travel. We regret that we cannot accommodate women beyond their sixth month of pregnancy and will not be responsible or liable for any complication relative to any pregnancy during the entire duration of the cruise.

Minors and Child Care

Minors under the age of 18 must be accompanied by a parent or other responsible adult over the age of 21. We reserve the right to limit the number of children under three years of age. Child care is not included in your fare.

Pets

We cannot accommodate pets on *The World*.

Photo Services

For your convenience, film and cameras are available for purchase in the ship boutique.

Port Charges

Port charges are included in your fare.

Ship-to-Shore Communications

Your ship is equipped with a telephone system that allows you to make direct-dial phone calls from your suite while at sea. Calls will be billed to your credit card or your shipboard folio. Please consult the ship's Reception Desk for current rates. Should someone wish to reach you while you are at sea, they should refer to the "Leave Behind" information provided in your final documents.

Smoking

For the comfort of all of our guests, all indoor restaurants and cafés are smoke free. Cigarette smoking is permitted in designated areas of the ship's other public rooms. Pipes and cigars are not permitted in any indoor public area, except in the cigar club.

Beauty Salon/Barber Services

Beauty salon and barber services are available from The World Spa by Clinique La Prairie including manicures and pedicures. Appointments for these chargeable services may be made on board the ship.

Spa and Fitness Center

Facials, massage, hydrotherapy, aerobics training and other individual treatments are on offer from the world famous Clinique La Prairie spa. Guests can work out on state-of-the-art fitness equipment plus take advantage of two swimming pools, a whirlpool, steam room and saunas.

Other Sports Facilities

A retractable marina at the stern of the ship will be the center for select water sports activities. Golf is well catered for with driving ranges, putting greens and golf simulators. A jogging track, paddle tennis court and full size tennis court complete the sporting choices.

Special Dietary Requirements

If you have special dietary requirements, please advise us of your needs on the Guest Information Form at least sixty days prior to sailing. Notification should be sent to our Special Services Department.

Special Occasions at Sea

If you are celebrating a birthday, anniversary, honeymoon or other special occasion during your voyage, we will be happy to celebrate the event with you. Please have your travel professional advise us of such occasions at least four weeks prior to departure. Notification should be sent to the Special Services Department.

Waitlist

Should the voyage of your choice be unavailable, you may ensure a position on a waitlist for that voyage by making a deposit of \$250 per guest, which will be applied toward your cruise deposit requirement and/or final payment should a suite become available. If you choose not to reserve a suite that becomes available, or should no suite become available, your deposit will be refunded.

Valuables

Your suite is equipped with a personal safe. *The World of ResidenSea* is not responsible for any articles such as money, jewelry, cameras, binoculars, documents or any other items which you retain in your personal control or in your suite.



BOOK YOUR GUEST SUITE

ON THE WORLD

RESERVE YOUR PLACE IN HISTORY

When *The World* sets sail in 2002, those aboard will take their place in travel history. Perhaps some day the concept of a luxury resort community at sea will be commonplace, but until then, *The World* and its continuous navigation of the globe are unique in travel.

By acting quickly, you can secure the ultimate savings on *The World* itinerary of your choice.

BOOKING SAVINGS ON PRE-PLANNED ITINERARIES

ADVANCE PAYMENT BONUS (APB)

Save 15% on your fare when you make your final payment six months prior to sailing.

EARLY BOOKING INCENTIVE (EBI)

Or, save 10% when you book and make your deposit four months in advance of sailing. Save 5% when you book and deposit three months prior to sailing.

COMBINATION SAILINGS PROGRAM

Combine two or more consecutive itineraries and enjoy additional savings. Ask your travel professional for details.

ONBOARD SAVINGS

Book a future itinerary while sailing on *The World* and enjoy additional savings.

TAILORED TIME FARESSM

The ultimate flexibility in vacation planning. With our unique pre-purchase program, **Tailored Time FaresSM**, you may purchase 30, 60, 100, 200 or 300 days at sea on *The World* of ResidenSea in Adagio, Libretto, Concerto or Sonata Suites. And over 24 months, you may use your days at sea in any combination you choose for custom vacations of your own design.

To book your suite aboard *The World* of ResidenSea, please contact your travel professional. To learn more about *The World* in the U.S. and Canada, call toll free 877-763-5314. From outside the US and Canada, call 954-759-5001. In Europe and the UK, call +44 (0) 870 900 7065, or visit our Web site at www.residensea.com.